



Investment
Managers

PART OF
BNP PARIBAS
GROUP

Marketing communication

Sustainability report 2024 AXA Logistics Europe Fund

Not for Retail distribution: This marketing communication is intended exclusively for Professional, Institutional or Wholesale Investors / Clients, as defined by applicable local laws and regulation. Circulation must be restricted accordingly.

THIS DOCUMENT IS CLASSIFIED CONFIDENTIAL / The recipient will not divulge any such information to any other party. Any reproduction of this information, in whole or in part, is prohibited without the prior written consent of the sender.

AXA IM Alts

- 4 Our business
- 5 Our role as responsible investors
- 6 Creating value for the long term
- 7 Our sustainability targets
- 8 Decarbonising our real estate portfolios

AXA Logistics Europe Fund

- 10 Fund overview
- 11 ESG strategy
- 12 ESG Active Management - Decarbonation
- 13 ESG Active Management - Resilience
- 14 ESG Active Management - Building Tomorrow

ESG Key Performance Indicators

- 16 Decarbonation and Data Utility
- 17 Building certificates and external ESG rating
- 18 External ESG Rating Over Time

Green Financing

- 20 Green Financing

Contents



AXA IM Alts





Our business

AXA IM Alts is a global leader in alternative investments with €188 billion of assets under management, across real estate, infrastructure, private debt, alternative credit and private equity.

Our company is made up of over 990 people located in 17 offices around the world serving more than 600 clients from Europe, North America, Asia Pacific and the Middle East. Collectively, we are the number one property portfolio and asset manager in Europe.¹

Active ownership

As one of the world's largest real assets managers, we want to contribute to a sustainable future by minimising the environmental impact of our assets, protecting them against the effects of climate change and working collaboratively to accelerate the transformation of our sector.

Our integrated approach to responsible investment incorporates financial and non-financial criteria, including ESG into every part of our investment decision-making process. This gives us a broad perspective on asset and sector-specific risks and helps us identify new opportunities to enhance value and to mitigate current and future risk.

Engaged towards Net Zero

AXA IM Alts has been part of the BNP Paribas Group since 1 July 2025.

We are committed to achieving net zero by 2050 - actively working to decarbonise our portfolios. Our aim is to actively reduce portfolio emissions through optimising energy use, refurbishing buildings, transitioning to decarbonised heat and fuel sources, and engaging tenants in sustainability efforts.

As part of this initiative and in line with the Paris Agreement, AXA IM has set measurable targets, which are detailed in our Climate Report.²

Source: AXA IM Alts data (unaudited) as of 30 June 2025.

(1) Highest-ranked Real Estate Manager in the European Union in IPE's Global Top 150 Real Estate Investment Managers, based on total value of real estate assets under management, November/December 2024. Ranked 10 globally.

(2) <https://www.axa-im.com/document/8072/view>

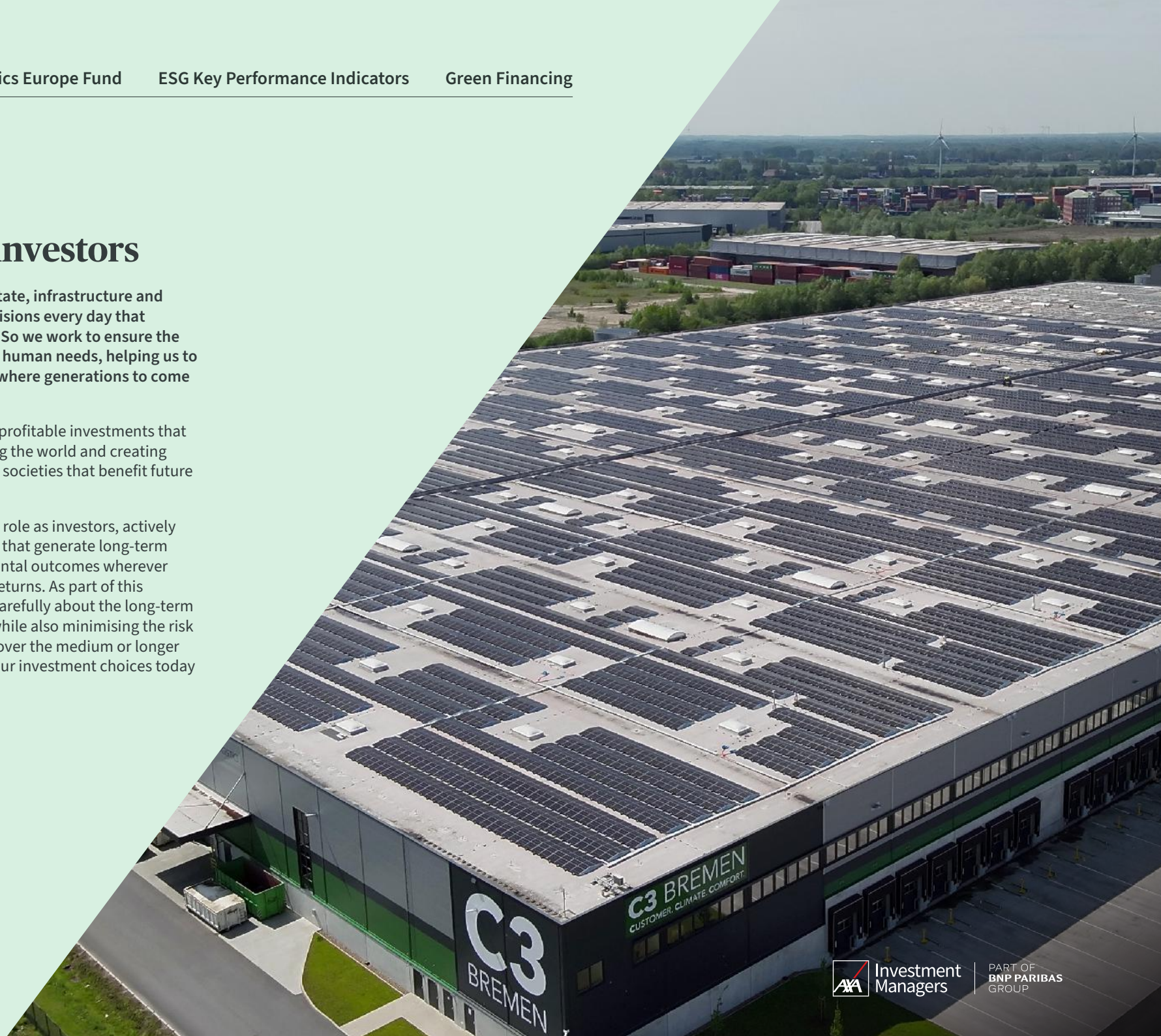


Our role as responsible investors

As a major investor in real estate, infrastructure and natural capital, we make decisions every day that directly affect people's lives. So we work to ensure the decisions we make meet real human needs, helping us to invest in and create a future where generations to come can thrive.

We aim to make sensible and profitable investments that are aligned with decarbonising the world and creating more resilient economies and societies that benefit future generations.

This is an essential part of our role as investors, actively seeking financial investments that generate long-term positive social and environmental outcomes wherever possible, as well as financial returns. As part of this responsibility, we think very carefully about the long-term impacts of our investments, while also minimising the risk of assets becoming stranded over the medium or longer terms. This thinking informs our investment choices today and for the years ahead.





Creating value for the long term

We work to identify and deliver opportunities to generate value over the long term, protecting the future value of our assets and addressing the social and sustainability challenges that are increasing in strength across our planet. But we cannot achieve an ambition of this scale on our own.

As society's needs and expectations grow in complexity, we are investing in the insight and ingenuity of our people and partners to tackle problems that are only just emerging.

This approach is helping us identify where best to focus our creativity and capital to create real social value, enabling us to make intelligent decisions and invest in essential infrastructure and emerging technologies that improve lives and outcomes every day.

Three pillars define our approach

Decarbonation

Investing towards net zero

Acting on carbon and energy efficiency:

Our reach is broad, but our environmental footprint doesn't have to be. The built environment is a major source of carbon emissions, and we are taking action to deliver more energy efficient buildings, low-carbon and renewable energy sources as well as source more sustainable materials for our property developments.

From investing in wind, solar and hydro solutions to implementing circular economy practices, we are exploring every opportunity to increase the efficiency of our assets.

Resilience

Committed to Paris Agreement

Acting on the risks associated with climate change:

Climate change poses several risks to our assets. We are already seeing an increase in physical risks, including extreme weather events, and it is our role to anticipate and prepare for the potential impacts they could have on our assets and the people that depend on them.

Equally, we are actively responding to rising regulatory and transitional risks, demanding and driving better energy performance from our assets and aligning this performance with global goals.

Building tomorrow

Investing in what matters

Creating and enhancing value:

Sustainability is a broad concept, so our strategy must be too. Reducing our environmental impact is an essential part of it, but so is unlocking new opportunities, nurturing innovation and strengthening the way we work with our partners.

The way people and buildings interact is changing, and we are embracing the opportunities this creates. We are working to ensure our assets promote health and well-being and provide the digital infrastructure and connectivity that our tenants expect.

Disclaimer: ESG strategy, approach and methodology may be adapted depending on the asset classes. One of the main limitations of this approach is related to the limited availability of data relevant to assess sustainability risks, such data not being systematically disclosed by issuers or counterparties, and when disclosed may follow various methodologies.



Our sustainability targets

At AXA IM Alts, we are applying the analytical rigour and expertise that is the foundation for our ESG activities. We have set out clear, measurable and focused goals that are ambitious yet achievable.

Net Zero by 2050

Near term reduction of 20% operational emission intensity (scope 1,2) for direct real estate, by 2025, compared with 2019 baseline year

75%

of Real Assets AUM certified by 2030.

4-Stars

Minimum 4-Stars GRESB Rating



We are taking measurable action to deliver sustainable long-term value to our clients. ESG considerations are fundamental to all our decision-making throughout the property life cycle.”

Isabelle Scemama
Global Head of AXA IM Alts





Decarbonising our real estate portfolios

Carbon emissions are one of the biggest investment challenges of this century. As a leader in the real estate industry, we also need to be a leader in low carbon real estate. To meet this challenge we initiated our decarbonation project over two years ago, a large-scale project that covers our entire real estate portfolio of over 2,500 buildings.

We analyse each and every asset and decide whether a refurbishment or an optimisation, or both, is the best option. Through detailed energy data and a consistent, comparable understanding of each property's energy and carbon performance we can prioritise those assets with the greatest potential to derive additional value and returns.

Focusing on energy first

We start by focusing on the most cost-effective measures, with an ongoing emphasis on activities that will improve energy efficiency. There may be lighting that can be switched to LEDs, inexpensive insulation or better building management. An important part of this is engaging with our tenants, making sure they are aligned with our objectives.

Disciplined capex

Beyond the ongoing optimisation of energy efficiency, many buildings will require a cost-benefit analysis to decide whether and to what extent capex should be deployed. This capex can vary widely. There may be changes to facades, windows and insulation that significantly lower emissions. It could be that there's a way to efficiently change the main energy source or even install, for example, solar panels.

For new developments, there is more scope to influence a building's energy and carbon profile which is why we have ambitious, clearly defined emission targets. For example, our new assets should consume 10% less energy compared to 'Nearly zero-energy buildings' (NZEB). These are buildings that are highly energy efficient and where nearly all energy comes from renewable sources.

Dedicated resources

Through this methodology, we embed decarbonation into all aspects of our real estate activities. This project has involved a huge commitment in terms of team resource, training, data consolidation and investment in tools. We have 12 ESG experts and over 130 asset managers globally who will implement our plan and engage with tenants to increase their understanding of and contribution to addressing the carbon emissions challenge.



AXA IM Alts

AXA Logistics Europe Fund

ESG Key Performance Indicators

Green Financing

AXA Logistics Europe Fund



Investment
Managers

PART OF
BNP PARIBAS
GROUP



Fund overview

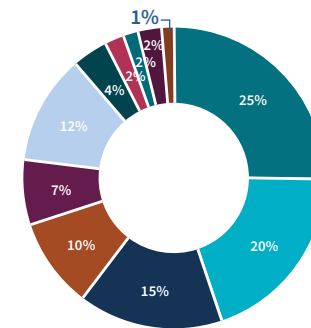
Introduction

AXA Logistics Europe Fund (the “Fund”) aims at building and managing a large-scale diversified portfolio of quality logistics assets in prime locations across Europe. The fund targets regular income distributions and long-term capital appreciation.

AXA Logistics Europe Fund offers a distinctive value proposition based on three strategic pillars:

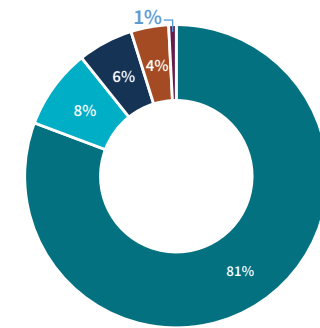
- **Exposure to an existing large, diversified, resilient portfolio:** logistics continues to provide resilient income returns outlook. The observed income growth is underpinned by positive demand-supply dynamics.
- **A conviction-driven investment strategy based on active portfolio management:** the logistics sector offers an attractive income perspective relative to other sectors due to structural shifts in demand. Rapid growth of e-commerce is a game-changer for European logistics, while demand for both bulk warehouses and urban last-mile delivery units continues. The limited availability of modern space means there is a need for build to suit assets.
- **On-the-ground in-house asset management and sector expertise to add value:** diversification is critical to managing risk. We mitigate tenant concentration risk by holding a large, diversified portfolio offering a staggered lease profile and a diverse occupier base. Scalability and size of portfolio offers greater leverage with tenants and other relevant counterparties

Real Estate portfolio split by geography



- France
- Germany
- United Kingdom
- Italy
- Netherlands
- Sweden
- Spain
- Norway
- Denmark
- Finland
- Poland

Real Estate portfolio split by Asset Type



- Distribution warehouse
- Last Mile / Parcel delivery / Cross dock
- E-Fulfillment center
- Other - Industrial
- Other

Source: AXA IM Alts data (unaudited) as of 31/12/2024. Risk of capital loss. Past performance is not representative of future results or performance. There can be no assurance that the Fund will achieve these results, implement the strategy or achieve its objectives.



ESG strategy

The Fund's investment approach is supported and enabled by our ESG strategy, which helps us integrate and embed ESG considerations into our actions and decision-making process. In line with AXA IM Alts' ESG strategy, our ESG approach is centred around three strategic pillars (see below).

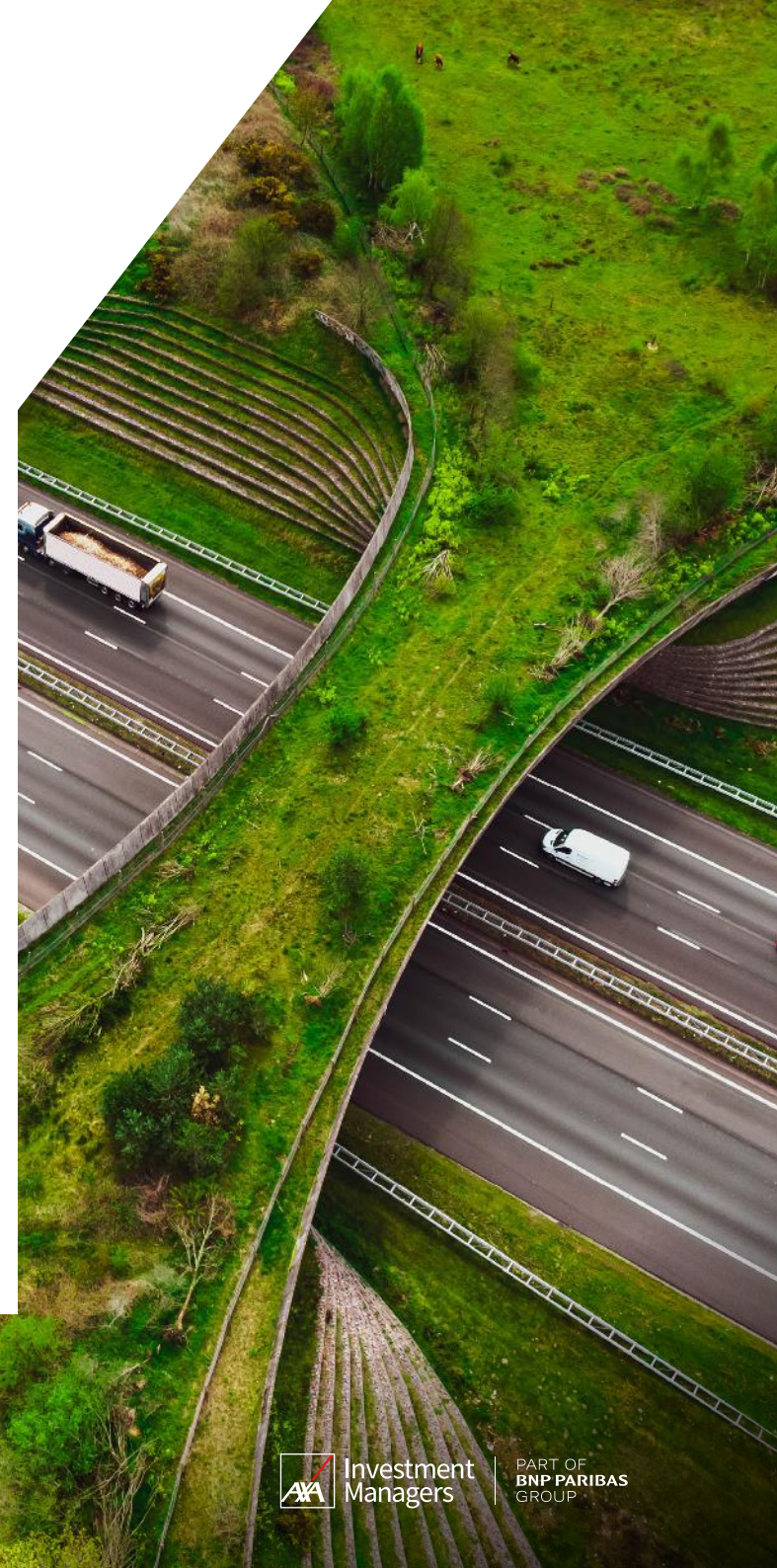
The Fund has adapted AXA IM Alts' targets to reflect its ambition of delivering sustainable value and be recognised as a sustainability leader. This allows us to focus our efforts and thereby maximise our sustainability impact.

The pillars are:



The Fund's ESG strategy is aligned with AXA IM Alts and based on clear objectives, to ensure we adhere to the highest industry standards without compromising on delivering sustainable returns for our investors. This approach is applied all the way from the acquisition through to the active management of the assets. However, the Fund doesn't only follow the overarching ESG strategy of AXA IM Alts, it also has more detailed, Fund specific ways of delivering an optimal ESG strategy, some of which are detailed in the examples below.

The Fund is participating in the GRESB (Global Real Estate Sustainability Benchmark) ranking, which ranks funds on ESG data and benchmarks the real asset industry. Ever since first participating in this benchmark in 2020, the Fund has implemented the recommendations to constantly improve its ESG performance, with the aim of becoming a sector leader. Since 2022, AXA Logistics Europe ranks consistently above peers for standing assets. We are also the highest ranking GRESB leader for logistics development, with a total score of 99 points for two years in a row.





ESG Active Management

Decarbonation

Decarbonation is a central priority for the Fund. The built environment contributes significantly to the world's annual carbon emissions, giving us the opportunity to make an important contribution to decarbonation.

We are actively investing towards a low carbon future, be it through the development of best-in-class real estate or the regeneration and transformation of existing building stock worthy of a place in the low carbon future.

We actively work towards improving our assets' energy efficiency and reducing their carbon intensity, through the deployment of complementary and asset-specific actions, such as:

- Performing energy audits on energy inefficient assets to build asset decarbonation plans and target alignment with CRREM trajectory
- Developing alternative sources of electricity and increase renewable energy such as solar panels or geothermal heating
- Implementing Smart Meters and Building-Management-System (BMS) across the portfolio to monitor and help our tenants to optimize the utility consumption and deploy corrective measures
- Replacing current lightings with low-energy lighting and LED, reducing the consumption of electricity and relative carbon footprint of each asset
- Implementing retrofit project to improve the insulation of the assets and further enhance the their energy efficiency



ESG Active Management

Resilience

Managing and mitigating the risks our assets face has always been a core aspect of our responsibilities to our investors, communities, and society as a whole. As we continue building a resilient portfolio, anticipating and preparing for potential disruption is becoming an increasingly important part of our role.

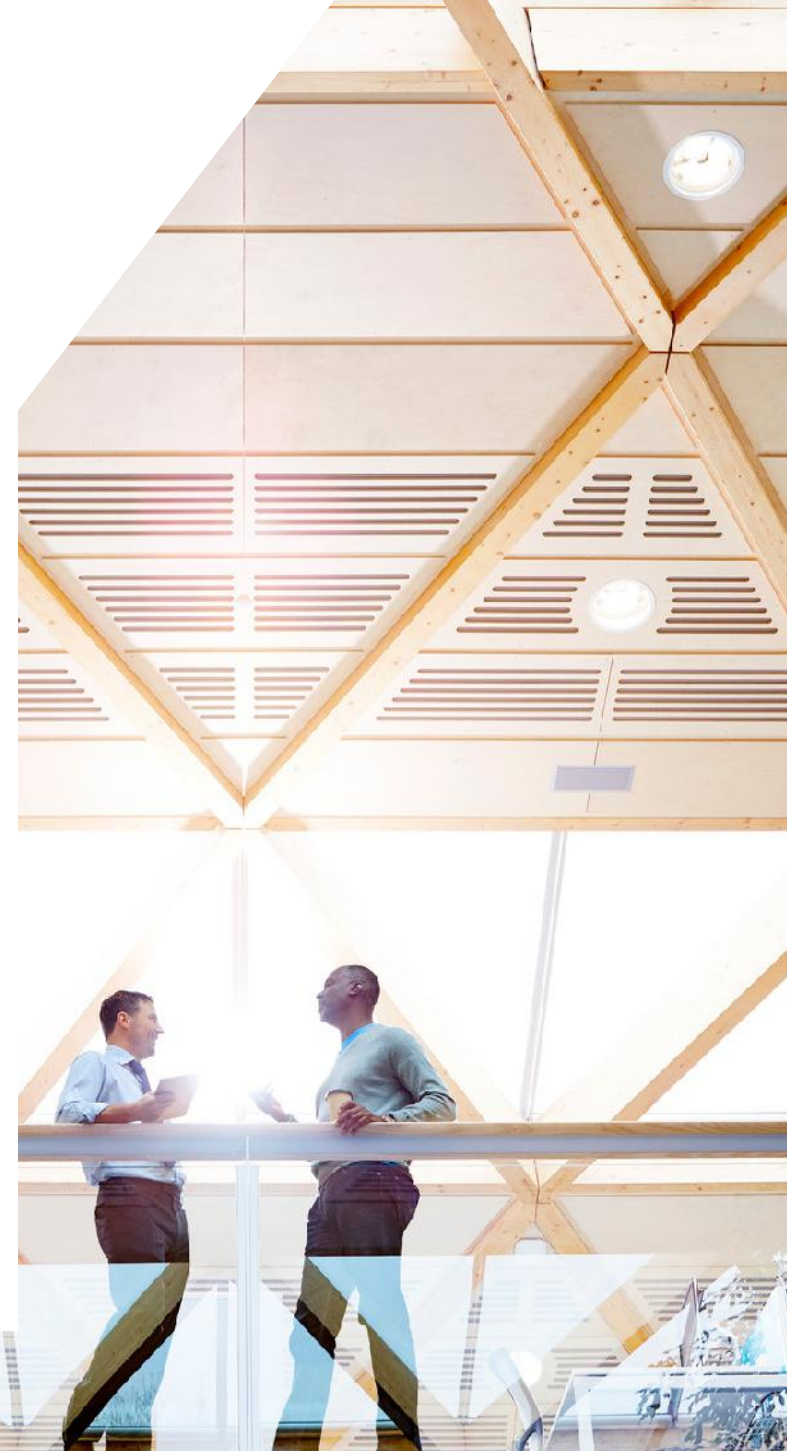
The impact of climate change represents the greatest physical threat to asset values across the world. However, the investment risks involved in making the transition to a low-carbon economy are potentially as serious as those arising from climate change itself.

The approach we have chosen is based on our understanding of how the world will evolve and takes into account the challenges of transition as well as the physical impact of climate change. Ultimately, we seek to ensure our decisions and investments make a positive difference to society and the environment.

We have started to use forward-looking indicators to better inform our views on asset resilience and help us consider the implications of various risks on future asset values. We are increasingly benchmarking our assets carbon intensity against CRREM models to make informed decisions and work towards aligning our assets with the Paris Agreement.

Below are some examples from the portfolio on how we work with these issues in practice:

- Implementation of a central software to capture, store, and monitor ESG related data points (consumption, certifications, EPC ratings, action plans etc.)
- Climate physical risk assessment performed for all assets





ESG Active Management

Building Tomorrow

Tenant engagement is at the heart of AXA IM Alts' responsible investment strategy. We are deeply convinced that the successes of our overarching and specific ESG objectives stem from better knowledge of stakeholders and attentiveness to their involvement with our assets.

Tenants have significant impact on the deployment and achievement of our ESG strategy. Maintaining a dialogue with partners and tenants is thus the key way to understand their expectations and to take appropriate action. Increasing their awareness of ESG issues and boosting their involvement is directly linked to improved ESG performance of our assets.

Some examples on how we engage with our partners and tenants involve:

- Initiatives such as improvements of outdoor spaces to encourage more social activity
- Insertion of Green Clauses in new lease contracts in order to collect utility and waste data
- Implementing tenant satisfaction survey to anticipate potential weakness / strengths of assets
- Integrating tenant's requirements in build-to-suit projects and offering the expected needs in the speculative schemes



AXA IM Alts

AXA Logistics Europe Fund

ESG Key Performance Indicators

Green Financing

ESG Key Performance Indicators



Investment
Managers

PART OF
BNP PARIBAS
GROUP



The scope of the reporting includes all assets held by the Fund as of Q4 2024 except for i) non relevant assets (such as, parking, lands etc ii) assets under development or planned for development in the next 12 months, iii) platforms (assets that do not require AM) and iv) assets acquired six months before the reporting date.

Decarbonation

Target

>50%
EPC 'B' (or better)
by the end of 2025

✓ **Result**
71%¹ as at Dec 2024

Target

20% decrease
in Scopes 1 & 2 GHG emissions
by 2025 compared to the 2019
baseline

✓ **Result**
-47% 2024 vs 2019 LfL

Objective of the indicators

Contribute to AXA IM Alts ultimate goal to achieve net zero carbon emission by 2050. An EPC certificate is an European regulatory tool that provides an indication of the building's energy efficiency. Our target is to reduce the number of energy intensive assets and increase the energy efficient ones.

Indicator detail

Achieving this target requires reduction of energy consumption by implementing energy efficiency measures, and the reduction of carbon intensity by the development of on-site renewable energy and the procurement of low carbon energy.

Data Coverage & Tenant Surveys

Target

>50%
AUM with whole building
utility data collected (landlord
+ tenant) in 2025 (except water)

✓ **Result**
94% whole building

Target

>95%
commercial AUM covered
by a tenant survey by 2025

✓ **Result**
Achieved

Objective of the indicators

Data is key to understanding a building's actual performance as well as the impact of actions undertaken to improve performance. One of AXA Logistics Europe Fund's objective is to increase visibility on utility data, including source of energy and water consumption and waste data. This allows the fund to monitor its assets 'environmental performance better.

Indicators detail

These indicators establish the relationship between the value of assets for which utility data is collected and the total value of real estate assets (landlord controlled).



The scope of the reporting includes all assets held by the Fund as of Q4 2024 except for i) non relevant assets (such as, parking, forests, lands etc ii) assets under development or planned for development in the next 12 months, iii) platforms (assets that do not require AM) and iv) assets acquired six months before the reporting date.

Building certificates

Target

>50%

AUM certified with a certification level of minimum ‘very good’ or equivalent by 2025

Result

43% of AuM based on Q2 2024 perimeter

Objective of the indicator

Certifications aim to distinguish buildings whose performance corresponds to current market best practices.

These can be obtained at the development or refurbishment stage, to assess the ESG performance of the building, as well as during the use phase, to assess both the building’s characteristics and user practices’ ESG performance.

Indicator detail

The labelling/certification indicators of real estate assets are used to measure the proportion of AUM with a green certification (energy performance certificate).

Given the diversity of assets as well as countries where the Fund invests, we consider all certifications as a first step – with a clear goal to improve the ones lagging the Fund ambition.

ESG external rating

Target

≥ 4-Star GRESB

Achieve and maintain the status by 2025



Result

Achieved in 2024

Objective of the indicator

GRESB is an investor-driven organization committed to assessing the ESG performance of real assets globally. More than 2,382 property companies, REITs, funds and developers used GRESB Real Estate assessment in 2024 (c. USD 7 trillion of AUM).

Indicator Detail

The GRESB Score offers an overall measure of Fund-level ESG performance – represented as a score of out 100 and a rating of up to 5 stars.

The GRESB Assessment examines hundreds of ESG data points, including performance indicators such as GHG emissions, waste, water usage and energy consumption.

The GRESB star rating is based on the GRESB Score and its quintile position relative to all participants in the GRESB Assessment, with annual calibration of the model. ambition.

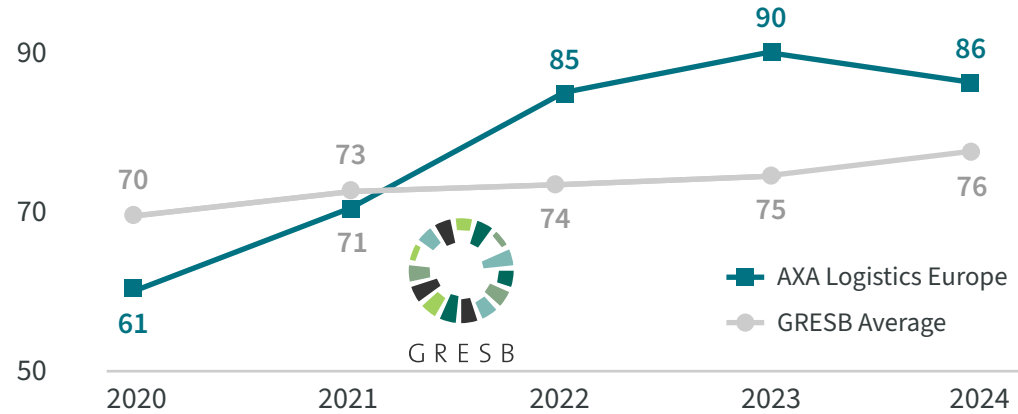


The scope of the reporting includes all assets held by the Fund as of Q4 2024 except for i) non relevant assets (such as, parking, forests, lands etc ii) assets under development or planned for development in the next 12 months, iii) platforms (assets that do not require AM) and iv) assets acquired six months before the reporting date.

ESG External Rating Over Time

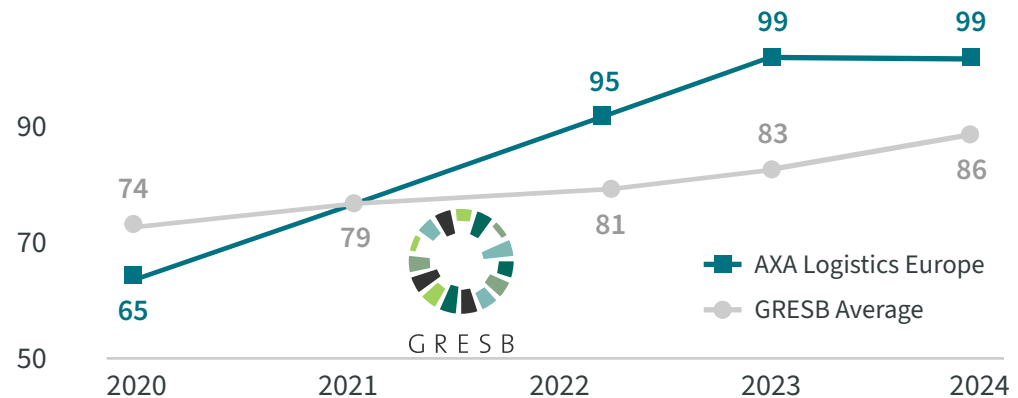
Standing Investments

4 GRESB stars	+ 10 pts vs GRESB average	3rd in customised peer Group ¹
----------------------------	--	--



Development Investments

5 GRESB stars	+ 13 pts vs GRESB average	1st in customised peer Group ¹
----------------------------	--	--



Source: AXA IM Alts data (unaudited) as of 31/12/2024. Risk of capital loss. Past performance is not representative of future results or performance. There can be no assurance that the Fund will achieve these results, implement the strategy or achieve its objectives.
 1. Customised peer group formed filtering on country, asset type and investment characteristics. Peer group size decreased and ranking improved.



Green Financing





Green Financing

The Green Finance Framework.

The fund's green strategy does not only encompass asset management of the real estate assets, but also the financing of these assets. As a European leader, the fund has moved from a traditional financing strategy – to an ESG-related financing strategy, through Green Bond financing, and Sustainability-linked revolving credit facilities.

In 2021, the Fund has successfully issued €800m of Green Bonds (in two issuances) under its Green Finance Framework that is in line with the highest market standard (BREEAM Excellent or EPC A/B). The Framework has been approved by Sustainalytics, a market leading independent ESG and corporate governance research, ratings and analytics firms, which confirmed its alignment with the Green Bond Principles (ICMA, 2021), and the Green Loan Principles as administered by Loan Market Association (LMA/APLMA, 2020).

Both issuances have been largely oversubscribed which is a testimony of the market endorsement of the fund's strategy. The fund is also currently moving its traditional revolving credit facility to a Sustainability Linked facility. The objective is to link the cost of the facility to ESG criteria in accordance with the Sustainability Linked Loan Principles. Further information related the environmental outcomes of the green projects is available at:



AXA Logistics Europe Bonds Issuance |
AXA IM Alts (axa-im.com)



Important Notice

This material (the “Material”) is being furnished by AXA Real Estate Investment Managers SGP (together with its affiliates, “AXA IMAlts”) in good faith on a confidential and non-reliance basis, solely for the recipient’s convenience and information for discussion purposes and for the purposes of providing certain information about AXA Logistics Europe Fund (the “Fund”). Persons interested in investing in the Fund should inform themselves about and observe legal requirements within their own countries for the acquisition of the interests in the Fund (the “Interests”) and any taxation or exchange control legislation affecting them personally, including the obtaining of any requisite governmental or other consents and the observation of any other formalities. A prospective investor may not rely on AXA IM-Alts when making determinations in relation to these matters.

This Material does not constitute an offer to sell or a solicitation of an offer to purchase Interests. Any such offer or solicitation shall be made only pursuant to the final offering memorandum and other subscription materials relating to the Fund complying with relevant laws and regulations (as amended or supplemented from time to time, the “Subscription Materials”), which describe certain risks and conflicts of interest related to an investment in the Fund as well as other important information about the Fund. The information, including any summaries, set forth herein does not purport to be complete and is subject to change. The Material is subject to all of the information set forth

in the Subscription Materials, including all of the cautionary statements set forth in the front of the Subscription Materials and the “Risk Factors and Potential Conflicts of Interest” section of the Subscription Materials. The Subscription Materials must be read carefully in their entirety prior to investing in the Fund. The Material does not constitute a part of the Subscription Materials. The distribution of this Material in certain jurisdictions may be restricted by law. The recipient represents that it is able to receive this Material without contravention of any applicable legal or regulatory restrictions in the jurisdiction in which it resides or conducts business. AXA IM-Alts does not accept any responsibility for ensuring that a recipient complies with applicable laws and regulations.

Investment in the Fund is speculative and involves substantial risks, including a high degree of risk, potential conflicts of interest and risks of loss. It is suitable only for sophisticated investors that have the financial ability and willingness to accept the high risks and lack of liquidity inherent in an investment in the Fund. The Interests described herein are not suitable for all investors and nothing in this Material or any subsequent document or any communication should be construed as a recommendation by AXA IM-Alts to invest in the Fund, or to refrain from investing in any other transaction. The information contained in this Material is not based on the particular circumstances of any named recipient. It does not take into

account the particular investment objectives, financial situation or needs of individual clients. Potential investors must make their own investment decisions whether or not to invest in the Fund. AXA IM-Alts is not acting in the capacity of advisor or fiduciary of any recipient. Nothing contained herein should be construed in any jurisdiction as tax, accounting, regulatory, legal, investment or other advice. The recipient assumes the terms, conditions and risks of the investment for its own account and is capable of doing so.

Any decision to invest in the Fund should be made after reviewing the Subscription Materials carefully, conducting such diligence and investigations as the investor deems necessary and consulting the investor’s own legal, accounting and tax advisors in order to make an independent determination of the suitability and consequences of an investment in the Fund. AXA IM-Alts disclaims any and all liability relating to a decision based on or for reliance on this Material.

By receiving this Material, and the sources of information contained herein, the recipient acknowledges that it is doing so on the basis of the foregoing, accepting all the limitations set out herein, and solely at its own risk. This Material is not to be distributed to, nor to be read by, retail clients. Furthermore, by accepting the Material, the recipient agrees that it will, and will cause its representatives and advisors to, keep the



information contained in it confidential and use the information only to discuss its potential interest in the Fund and for no other purpose and will not disclose any such information to any other person without the prior written consent of AXA IM-Alts. Any reproduction of this information in whole or in part is prohibited and the recipient agrees to return it to AXA IM-Alts upon request.

The figures provided herein relate to past periods and past performance is not a reliable indicator of future performance; past performance may have been calculated on un-audited figures. There can be no assurance that the Fund's investments will achieve comparable results, that targeted returns, diversification or asset allocations will be met or that the Fund will be able to implement its investment strategy and investment approach or achieve its investment objective. As used throughout the Material, and unless otherwise indicated, all IRRs and equity multiples are presented on a "gross" basis, and "gross IRR" shall mean an aggregate, annual, compound gross internal rate of return on investments. Gross IRRs do not reflect management fees, "carried interest," taxes (whether borne by investors or entities through which they participate in investments), broken-deal expenses and other transaction costs in connection with the disposition of unrealized investments and other expenses to be borne by investors in the funds that made such investments and those expenses that will be borne by investors in the Fund, which in the aggregate were, in the

case of such prior funds, and are expected to be, in the case of the Fund, substantial. For a description of such types of fees and expenses with respect to the Fund, see "Summary of Terms" of the Subscription Materials. Prospective investors should review carefully the Notes and other qualifying information accompanying the performance information throughout the Material. Actual returns on unrealized investments described herein will depend on, among other factors, future operating results, the value of the assets and market conditions at the time of disposition, legal and contractual restrictions on transfer that may limit liquidity, any related transaction costs and the timing and manner of sale, all of which may differ from the assumptions and circumstances on which the valuations used in the prior performance data contained herein are based. Accordingly, the actual realized returns on unrealized investments may differ materially from the returns indicated herein.

Certain information contained herein has been obtained from published sources and/or originated by or derived from other parties and therefore the accuracy and completeness of such information and estimates has not been verified. None of AXA IM-Alts, directors, officers, employees, members or shareholders of AXA IM-Alts entities assumes any liability whatsoever for any such information and opinions. Information contained herein is established on the accounting information or on market data basis. All accounting information is un-audited. This Material

does not take into account the particular investment objectives or financial circumstances of any specific person who may receive it.

The reference to league tables and awards is not an indicator of the future places in league tables or awards.

Some statements and analysis in this Material and some examples provided are based upon or derived from the hypothetical performance of models developed by AXA IM-Alts and/or third parties. In particular, in connection with certain investments for which no external pricing information is available, AXA IM-Alts will rely on internal pricing models, using certain modelling and data assumptions. Such valuations may vary from valuations performed by other parties for similar types of securities. Models are inherently imperfect and there is no assurance that the Fund will perform as predicted by such models, or that such Fund will be profitable. No representation is made that any returns or other figures indicated in this Material and derived from such models will be achieved. AXA IM-Alts expressly disclaims any responsibility for (i) the accuracy of the models or estimates used in deriving the analyses, (ii) any errors or omissions in computing or disseminating the analyses or (iii) any uses to which the analyses are put.

Statements contained in the Material that are not historical facts are based on current expectations, estimates, projections,



opinions, and/or beliefs and/or market estimation of AXA IMAlts at the date of this Material. Such statements involve known and unknown risks, uncertainties and other factors, and undue reliance should not be placed thereon. Moreover, certain information contained in this Material constitutes “forward-looking statements” which can be identified by the use of forward-looking terminology such as “may,” “can,” “will,” “would,” “seek,” “should,” “expect,” “anticipate,” “project,” “estimate,” “intend,” “forecast,” “continue,” “target,” “plan,” “believe” or the negatives thereof or other variations thereon or comparable terminology.

This Material contains information about AXA IM-Alts, certain of its personnel and the historical performance information of other investment vehicles whose portfolios are (or were, as the case may be) managed and/or advised by AXA IM-Alts. Such information has been included to provide prospective investors with information as to AXA IM-Alts’ general portfolio management experience. Prospective investors should not view the past performance of AXA IM-Alts as indicative of the future results of the Fund. Other investment vehicles whose portfolios are advised and/or managed by AXA IM-Alts may not have capital structures or investment restrictions comparable to those expected to apply for the Fund and no assurance can be given that any particular individual will be involved in managing the portfolio of the Fund for any length of time.

Information regarding the background and experience of personnel of AXA IM-Alts are provided for information purpose only. Such persons may not necessarily continue to be employed by AXA IM-Alts and may not perform or continue to perform services for AXA IM-Alts.

Pictures are for demonstration and illustration purpose only.

Specific risks associated with real estate investing include but are not limited to: risks associated with acquisition, financing, ownership, operation and disposal of real estate; development risk, litigation; investments through other partnerships and joint ventures; environmental liabilities; property taxes; property leverage risk; credit risk of tenants; lack of liquidity of investments; contingent liabilities on disposition of investments; currency risk; hedging; counterparty risk; and uninsured losses. The aforementioned risks are qualified in their entirety by more detailed risks factors and potential conflicts of interest set forth in the Subscription Materials relating to the Fund. With respect to the “pipeline” transactions described herein, there is no assurance that any pipeline investment will be consummated or that it will be consummated on the terms described herein or meet its projected return objectives.

Any hypothetical illustrations, forecasts and estimates contained in this Material are forward-looking statements and are based upon assumptions. Hypothetical illustrations are necessarily

speculative in nature and it can be expected that some or all of the assumptions underlying the hypothetical illustrations will not materialise or will vary significantly from actual results. No representation is made that any returns indicated will be achieved. Accordingly, the hypothetical illustrations are only an estimate and AXA IM-Alts assumes no duty to update any forward-looking statement. This Material may also contain historical market data; however, historical market trends are not reliable indicators of future market behaviour.

AXA IM-Alts makes no representation or warranty (express or implied) of any nature nor is responsible or liable in any way with respect to the truthfulness, completeness or accuracy of any information, projection, representation or warranty (express or implied) in, or omission from, this information.

All information and data in this Material is established on the accounting information, on market data basis or has been sourced from a number of recognized industry providers and does not take into account the particular investment objectives of any specific person who receive it. All accounting information, except otherwise specified, is un-audited. AXA IM-Alts disclaims any and all liability relating to a decision based on or for reliance on this Material. The possible subscriptions will only be accepted from authorized investors, on the basis of a documentation complying with relevant laws and



regulations. AXA IM-Alts may perceive or pay fees or rebates, in compliance with the Markets in Financial Instruments Directive, as implemented in each state of the European Economic Area.

The classification of the Fund under SFDR may be subject to adjustments and amendments, since SFDR has come into force recently only and certain aspects of SFDR may be subject to new and/or different interpretations than those existing at the date of this Material. As part of the ongoing assessment and current process of classifying its financial products under SFDR, the Manager reserves the right, in accordance with and within the limits of applicable regulations and of the Fund's legal documentation, to amend the classification of the Fund from time to time to reflect changes in market practice, its own interpretations, SFDR-related laws or regulations or currently-applicable delegated regulations, communications from national or European authorities or court decisions clarifying SFDR interpretations. Investors are reminded that they should not base their investment decisions on the information presented under SFDR only.

UK recipients only: This material has not been approved by the UK Financial Conduct Authority and can only be communicated to and retained by persons who fall within an exemption under the Financial Services and Markets Act 2000 (Financial Promotion) Order 2005 (SI 2005/1529) (as amended) or otherwise

to whom this material may lawfully be directed. Any UK recipient receiving this material who does not fall within these exemptions should not rely or act on it and should return it.

Swiss recipients only: The distribution of Units in Switzerland will be exclusively made to, and directed at, qualified investors (the "Qualified Investors"), as defined in the Swiss Collective Investment Scheme Act of 23 June 2006, as amended ("CISA") and its implementing ordinance. Accordingly, the Fund has not been and will not be registered with the Swiss Financial Market Supervisory Authority (FINMA). This Memorandum and/ or any other offering materials relating to the Units may be made available in Switzerland solely to Qualified Investors. This Presentation and the Memorandum as well as the annual report of the Fund can be obtained free of charge from the Swiss representative in Switzerland. In respect of the Units distributed in or from Switzerland, the place of performance and jurisdiction is at the registered office of the Swiss representative. The Swiss representative is First Independent Fund Services Ltd, Klausstrasse 33, CH-8008 Zürich. The Swiss paying agent is NPB Neue Privat Bank AG, Limmatquai 1, Postfach CH-8022 Zürich.

German recipients only: This is promotional material and not a regulatory mandatory document. The data, figures, declarations, analysis, predictions, concepts and any other information provided in this document is provided by AXA

Investment Managers Deutschland GmbH / its affiliated companies ("AXA IM DE") and based on our state of knowledge at the time of its creation. The mentioned information may be amended at any time without notice. Due to the simplification the information in this document can be subjective. As far as we refer to information of third parties, we point out that we do not overtake any liability for its content, for the correctness, completeness, topicality and adequacy of these data even if we use only such data which we consider to be reliable. Nevertheless, unintended erroneous statements or presentations may occur. A liability or guarantee for the up-to-dateness, correctness and completeness of the allocated information cannot be assumed by AXA IM DE. Please read the latest prospectus including the general and special terms and conditions of the Portfolio respectively the articles of association, which are the only relevant basis for the purchase of Portfolio units/shares. Any transaction on the basis of information or explanation which is not contained within the prospectus is carried out exclusively on risk of the buyer. You will receive the respective key information document for packaged retail and insurance-based investment products ("PRIIP") in your national language in paper form and the respective annual and semi-annual report upon request free of charge and in paper form at AXA Investment Managers



Deutschland GmbH • Thurn-und-Taxis-Platz 6 • 60313 Frankfurt/Main or from our distribution partners or under www.axa-im.de. At the AXA Investment Managers Deutschland GmbH as well as at www.axa-im.de a summary of information on investor rights is available upon request in German language. The company managing the respective Portfolio may discontinue further distribution of the Portfolio.

no indicator for any future returns or trends. The value and income derived from investments may go down as well as up and is not guaranteed. Furthermore, commissions and costs have an adverse effect on the performance of a Portfolio. The (future-) performance is subject to taxation which depends on the personal situation of each investor and which may change in the future.

The information in this document is provided for information purposes only and shall not be construed as legal or tax advice by AXA IM DE, nor shall it be construed as a solicitation to buy or a recommendation to invest. An investment or other decision may not be made on the only basis of this document. Prior to any transaction potentially interested parties must carefully consider the appropriateness of their investments to their specific situation considering the tax aspects and ensure that they understand the risks involved in their investment decisions. As part of this individual consultation you will also be informed of

costs and fees associated with the purchase of one of the mentioned products. While providing investment services, AXA Investment Managers Deutschland GmbH and/or its affiliates may receive or grant benefits (commissions, fees or other payments as well as all monetary benefits). We point out that this document does not comply with the requirements of respective applicable Directive 2004/39/EG or 2014/65/EU (MiFID/ MiFID II) and the related directives and regulations. Therefore, this document is not suitable for any kind of sales services, consulting or financial services vis-à-vis retail clients. The information in this document is exclusively addressed to professional clients who receive this document directly from AXA Investment Managers Deutschland GmbH / its affiliated companies. It is to be treated strictly confidential. The recipients are not allowed to pass this document and the information contained herein on to a third party, in whole or in part, without the prior written consent of AXA Investment Managers Deutschland GmbH / its affiliated companies. – for professional clients only / not for retail investors – Korean recipients only: Neither the Fund nor AXA REIM SGP is making any representation with respect to the eligibility of any recipients of this document to acquire Units in the Fund therein under the laws of Korea, including but without limitation the Foreign Exchange Transaction Act and Regulations thereunder. The Units may only be offered to Qualified Professional Investors, as such term is defined under the Financial Investment Services and Capital Markets Act, and none of the Units may be offered, sold or delivered, or offered or

sold to any person for re-offering or resale, directly or indirectly, in Korea or to any resident of Korea except pursuant to applicable laws and regulations of Korea. Singapore recipients only: In Singapore, this document is issued by AXA Investment Managers Asia (Singapore) Ltd. (Registration No. 199001714W) and is intended for the use of Institutional Investors only as defined in Section 4A of the Securities and Futures Act (Cap. 289) and must not be relied upon by retail investors. Circulation must be restricted accordingly.

Notice to Australian investors: In Australia, this document is issued by AXA Investment Managers Australia Ltd (ABN 47 107 346 841 AFSL 273320) and is intended only for professional investors, sophisticated investors and wholesale clients as defined in the Corporations Act 2001 (Cth



Notice to Japanese clients: 私募に関する告知

アクサ・インベストメント・マネージャーズ株式会社（以下、「弊社」といいます。）は、お客様に対して行う私募による有価証券の取得の申込の勧誘に際しお客様に対して以下の事項を告知致します。以下に記載する有価証券ごとの告知の内容をご確認いただきますようお願い致します。

内投資信託又は外国投資信託の受益証券（受益権を含みます。金融商品取引法第2条第1項第10号に定める有価証券）

- 弊社がお客様に対して行う受益証券の取得の申込の勧誘は、金融商品取引法第23条の13第1項に定義される適格機関投資家向け勧誘に該当しますので、取得申込の勧誘に関し、金融商品取引法第4条第1項の規定による届出が行われていません。
- お客様は、受益者となった後、自己に帰属する受益証券を適格機関投資家（金融商品取引法第2条第3項第1号に規定する適格機関投資家を言います。以下同じ。）以外の者に譲渡することが出来ません。

外国投資証券（金融商品取引法第2条第1項第11号に定める有価証券）

- 弊社がお客様に対して行う外国投資証券の取得の申込の勧誘は、金融商品取引法第23条の13第1項に定義される適格機関投資家向け勧誘に該当しますので、取得申込の勧誘に関し、金融商品取引法第4条第1項の規定による届出が行われていません。

- お客様は、取得申込時に、投資後自己に帰属する外国投資証券を適格機関投資家以外の者に譲渡しないことを定めた契約を当該外国投資証券の発行者と締結するものとします。

外国集団投資スキーム持分（金融商品取引法第2条第2項第6号に定める有価証券）

- 弊社がお客様に対して行う外国集団投資スキーム持分の取得の申込の勧誘は、金融商品取引法第23条の13第4項に定義される少数向け勧誘に該当しますので、当該取得申込の勧誘に関し、金融商品取引法第4条第1項の規定による届出が行われていません。
- 外国集団投資スキーム持分は、特定有価証券の内容等の開示に関する内閣府令第1条第5号の3に掲げる外国有価証券投資事業権利等に該当する特定有価証券であり、当該持分は金融商品取引法第2条第2項第6号に掲げる権利に該当します。ディスクレイマー本資料は、アクサ・インベストメント・マネージャーズ株式会社（以下、「弊社」といいます。）が作成したものです。弊社は信頼性が高いとみなす情報等に基づいて本資料を作成しておりますが、当該情報等が正確であることを保証するものではなく、本資料に記載された情報等を使用することによりお客様が投資判断を行った結果被った損害を補償するものではありません。本資料に記載された意見・見通しは作成時点での弊社及びアクサ・インベストメント・マネージャーズグループの判断を反映したものであり、将来の市場環境の変動や、当該意見・見通しの実現を保証するものではありません。また、

当該意見・見通しは、予告なく変更されることがあります。また、過去の運用実績は将来の運用成果を保証するものではありません。

投資した資産の価値の減少を含むリスクは、投資信託等（投資信託受益証券、外国投資信託受益証券及び外国投資証券（以下、併せて「外国投資信託等」といいます。）並びに金融商品取引法第2条第2項第6号に掲げる権利（以下、「外国集団投資スキーム持分」といいます。））をご購入のお客様ご自身が負います。

本資料は、弊社が設定する投資信託の自己募集、又は外国投資信託等若しくは外国集団投資スキーム持分の募集の取扱い若しくは私募の取扱いのために提供させていただき資料であり、弊社が行う他の業務（投資一任契約に係る業務、投資信託委託会社としての業務等）の営業行為を行うことを目的としたものではありません。アクサ・インベストメント・マネージャーズ株式会社金融商品取引業者 登録番号：関東財務局長（金商）第16号加入協会 一般社団法人 日本投資顧問業協会、一般社団法人 投資信託協会、一般社団法人 第二種金融商品取引業協会、日本証券業協会

© 2025 AXA Real Estate Investment Managers SGP and its

Affiliated Companies. All rights reserved.